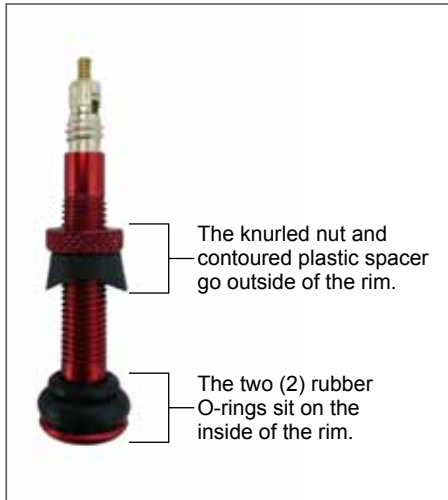


## Tubeless Valve Installation

How to install American Classic Tubeless Valves.

- American Classic Tubeless Valves are compatible with both American Classic rims and other manufacturer's rims.



1. Insert red valve stem with the two (2) rubber O-rings into the tire well.



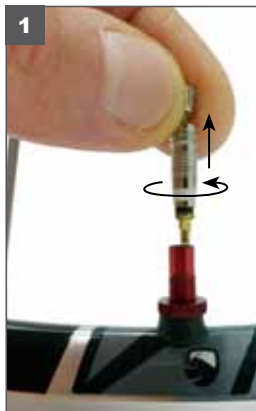
2. Use the plastic contoured spacer to protect the rim from the knurled nut.



3. Firmly press the base of the valve into the rim with your thumb and finger-tighten the knurled nut.

## To Remove and Install Valve Core

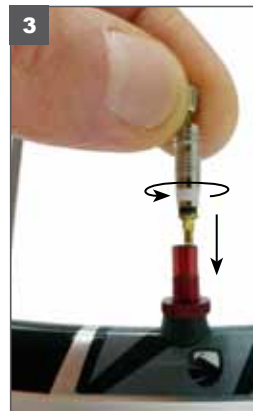
- **Tools Needed:** Pliers or Presta Valve Core Removal Tool



1. With the valve installed, unthread and remove the valve core using pliers or a valve core removal tool.



2. Once the silver presta valve core is removed, coat it with Tri-Flow® or a similar lube inside and out. Lube prevents the valve from clogging with sealant.



3. Reinstall the valve core, finger-tighten only. Do not use a wrench or pliers to avoid stripping the aluminum threads in the valve.



4. When using a pump be careful not to bend the valve with the pump head. When removing pump head, pull straight off and avoid twisting or sideways movement.



5. Before riding make sure the valve is closed and check that the silver valve core and red knurled nut are finger-tight.

Proper assembly is important to rider safety.

**All repairs should be performed by a professional bicycle mechanic.**

sales@amclassic.com • www.amclassic.com